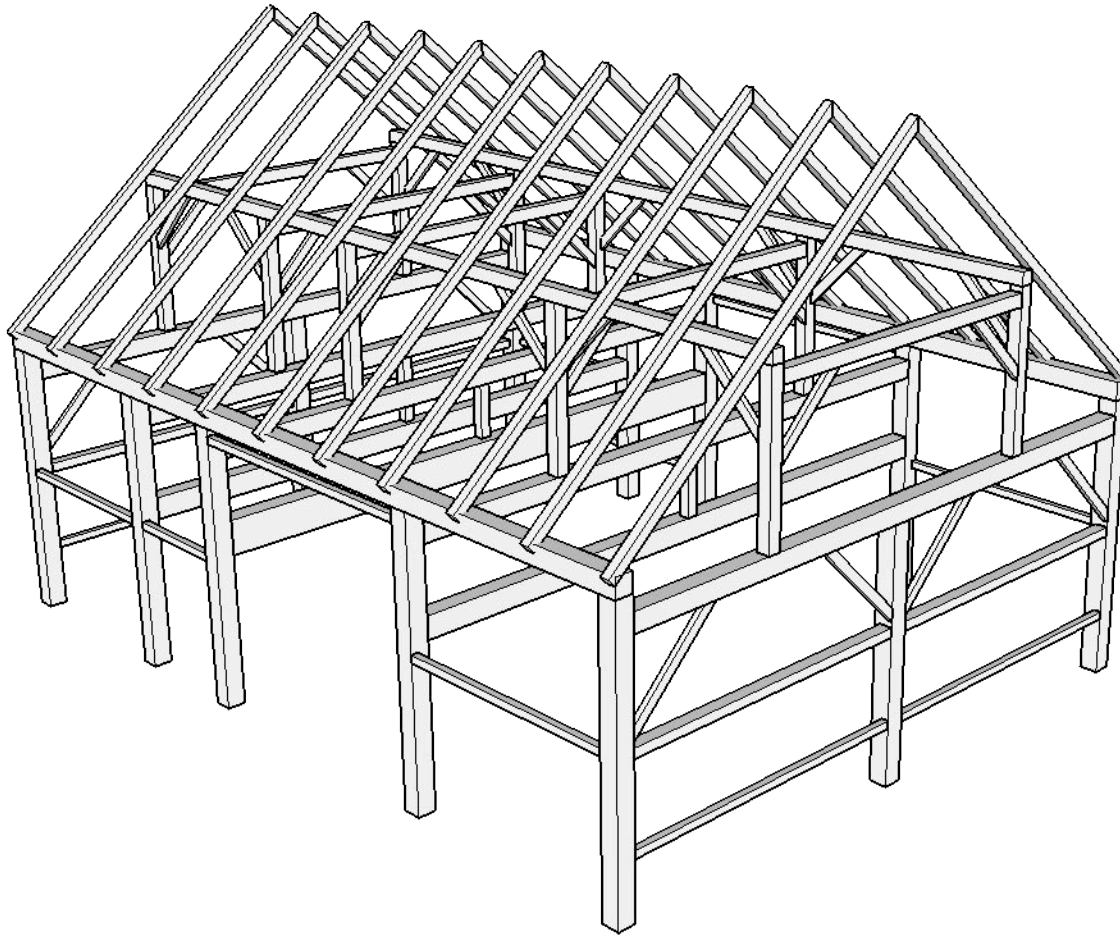


 Green Mountain Timber Frames  
19 North Street  
Middletown Springs, VT 05757  
802 774 8972  
[luke@greenmountaintimberframes.com](mailto:luke@greenmountaintimberframes.com)

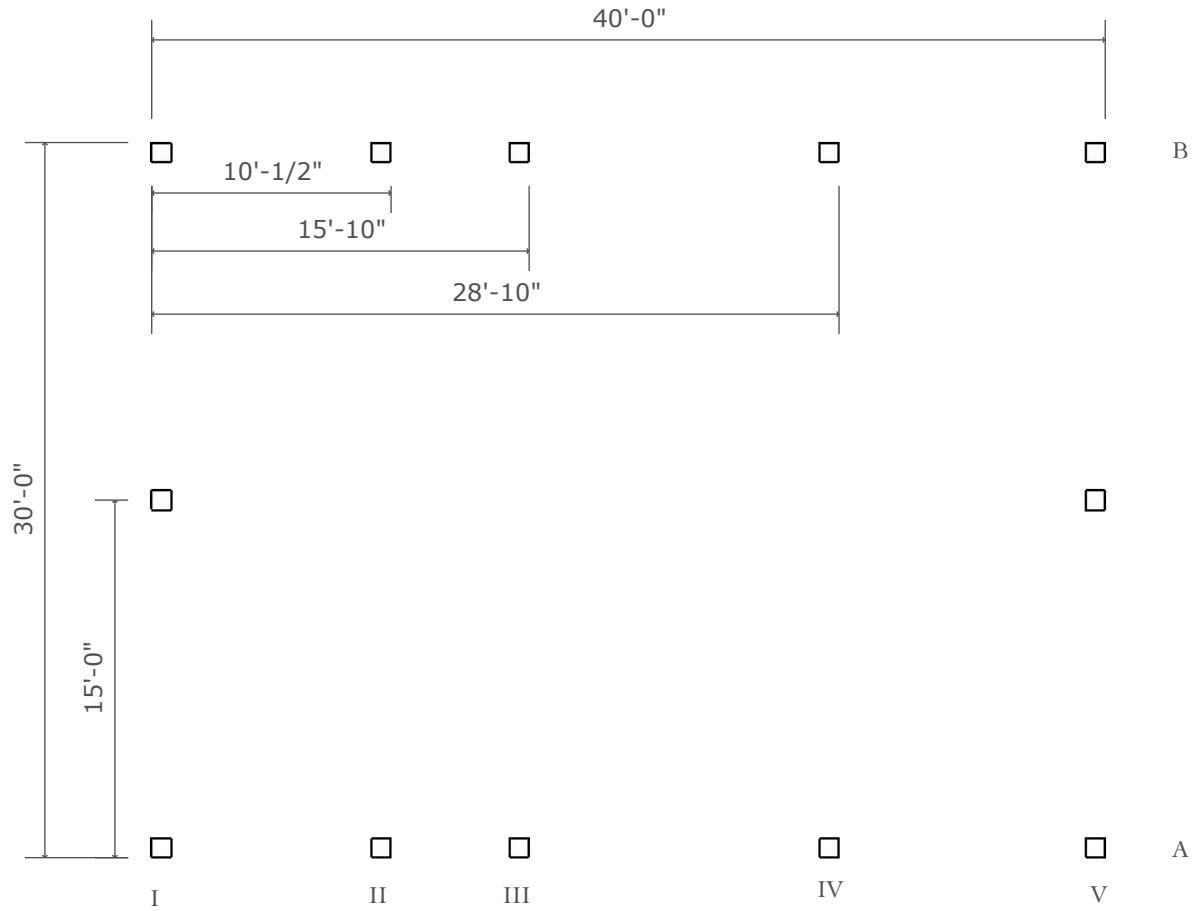
Greenwich Barn Circa 1800  
Greenwich, NY



GMTF



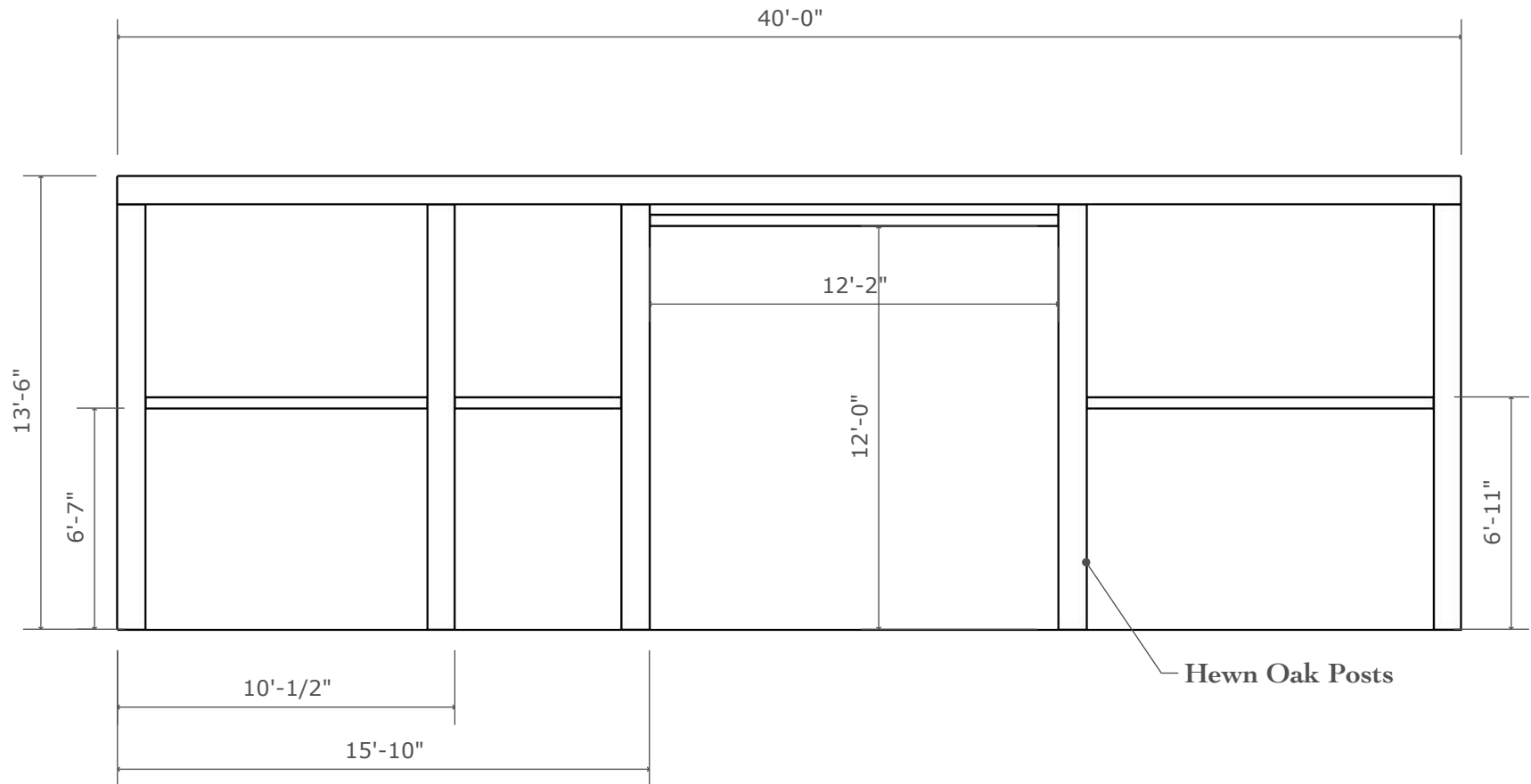
Post Plan  
1/8" = 1'



GMTF



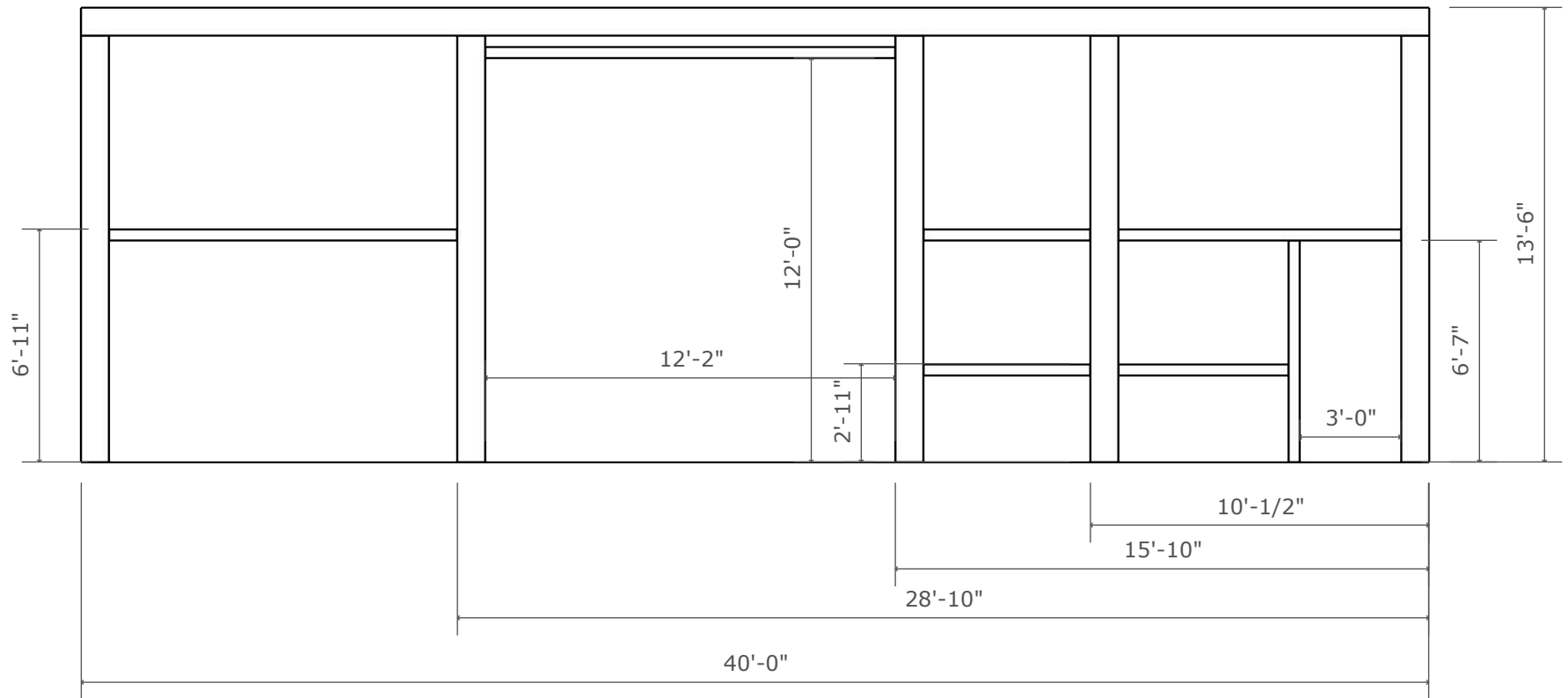
Plate Wall A  
Not to Scale



GMTF

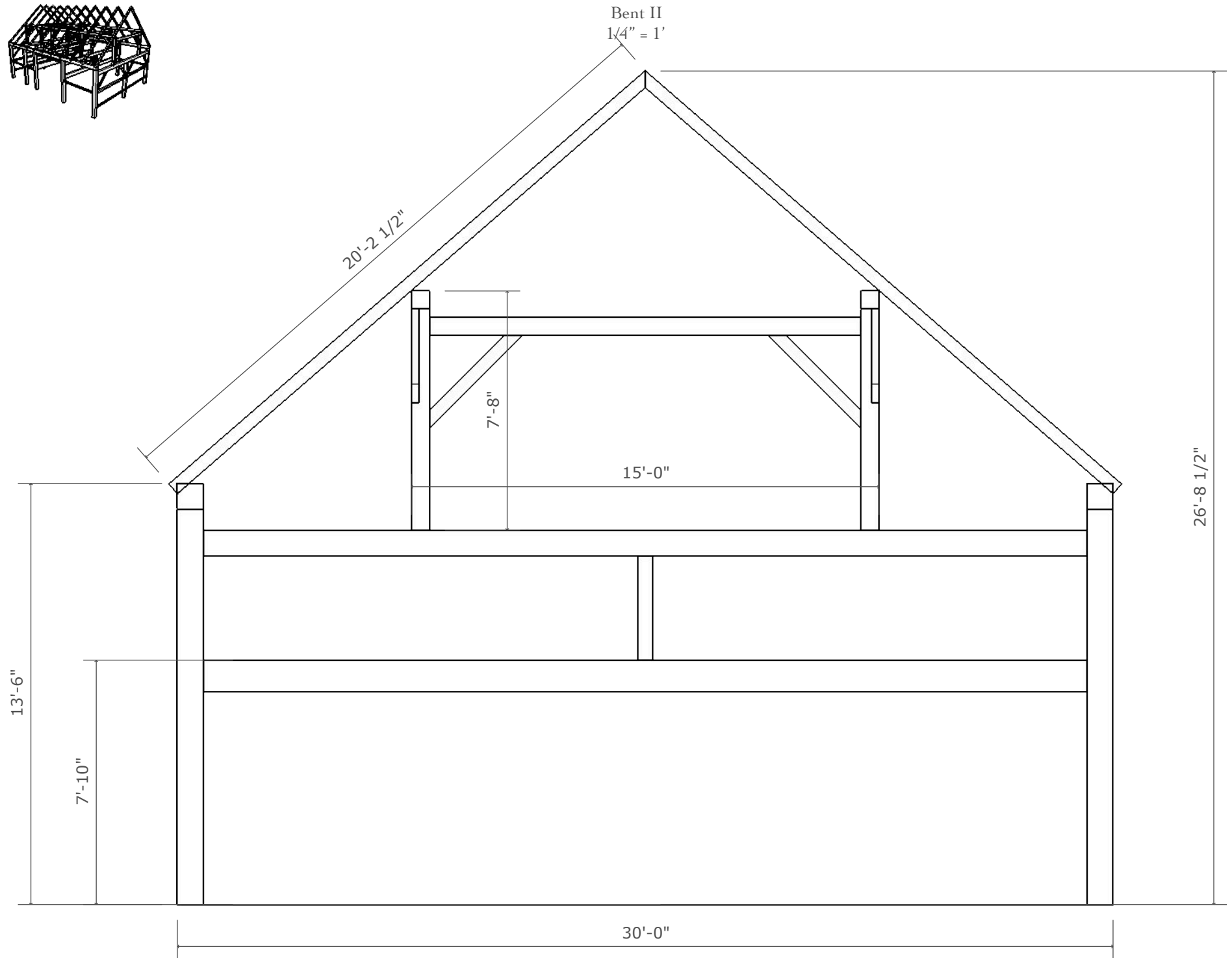


Plate Wall B  
Not to Scale



GMTF

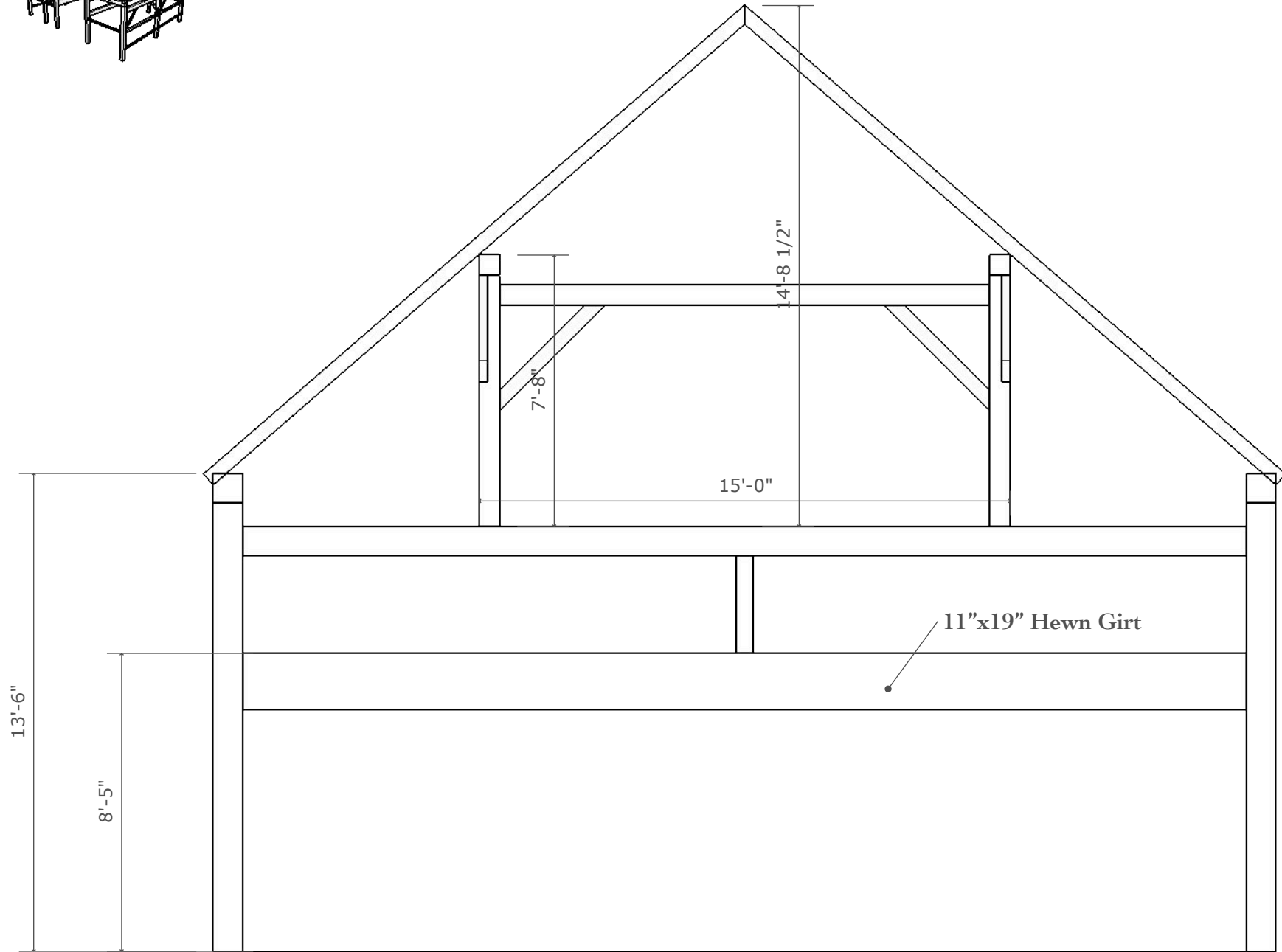




GMTF

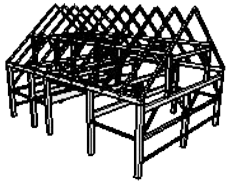


Bent III  
1/4" = 1'

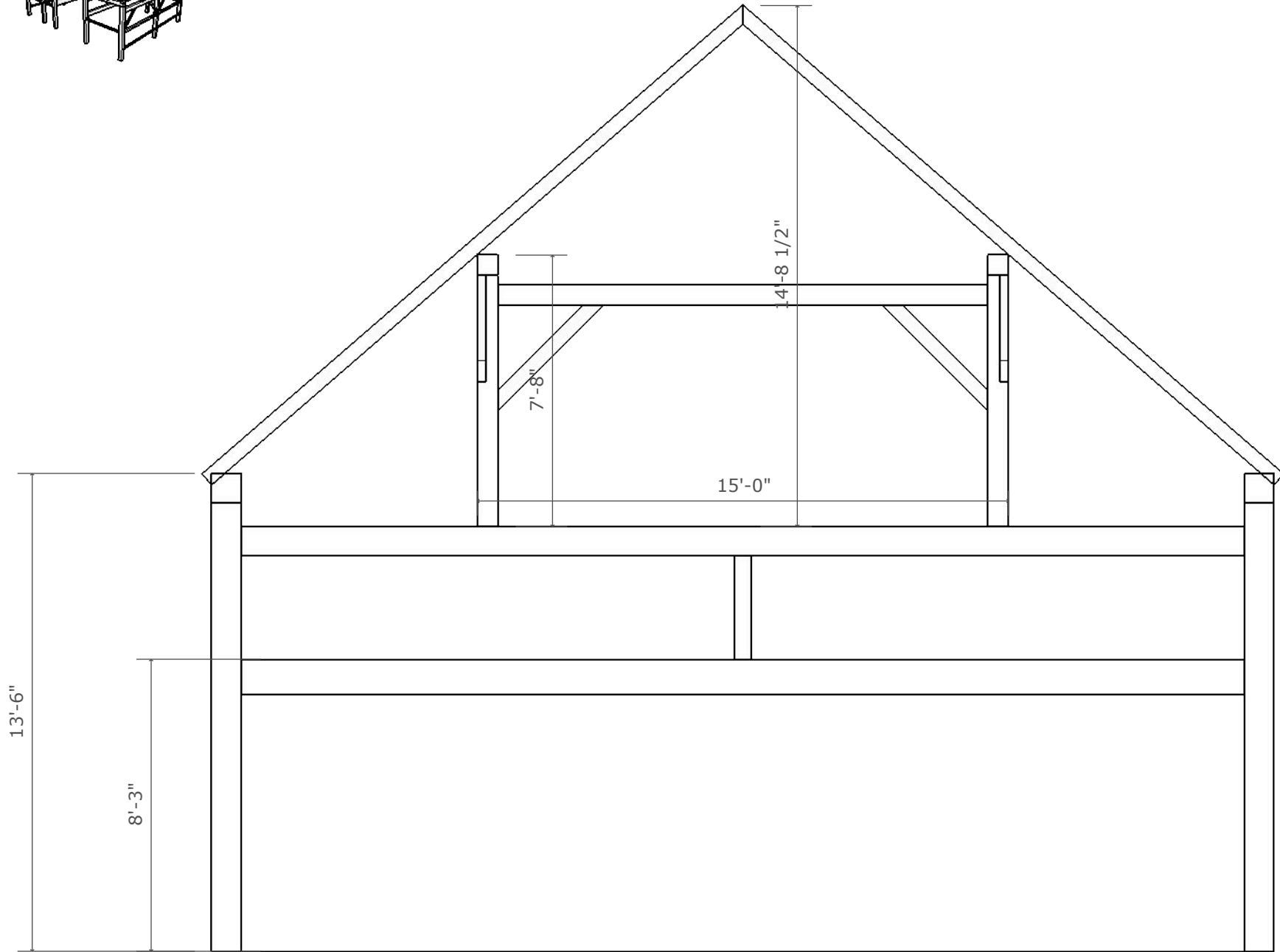


GMTF

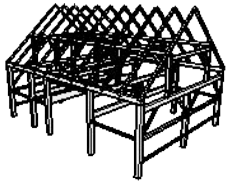




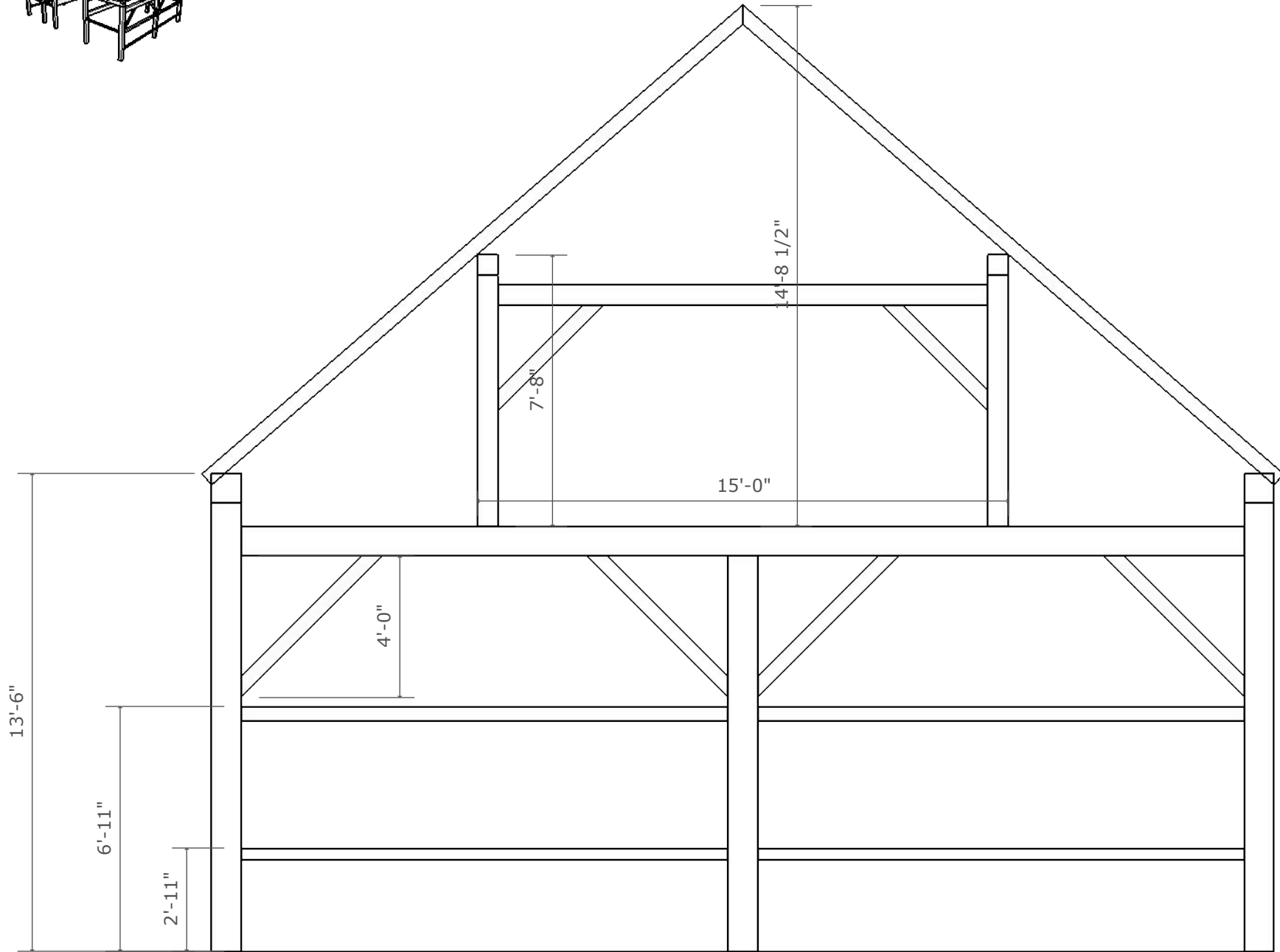
Bent IV  
1/4" = 1'



GMTF



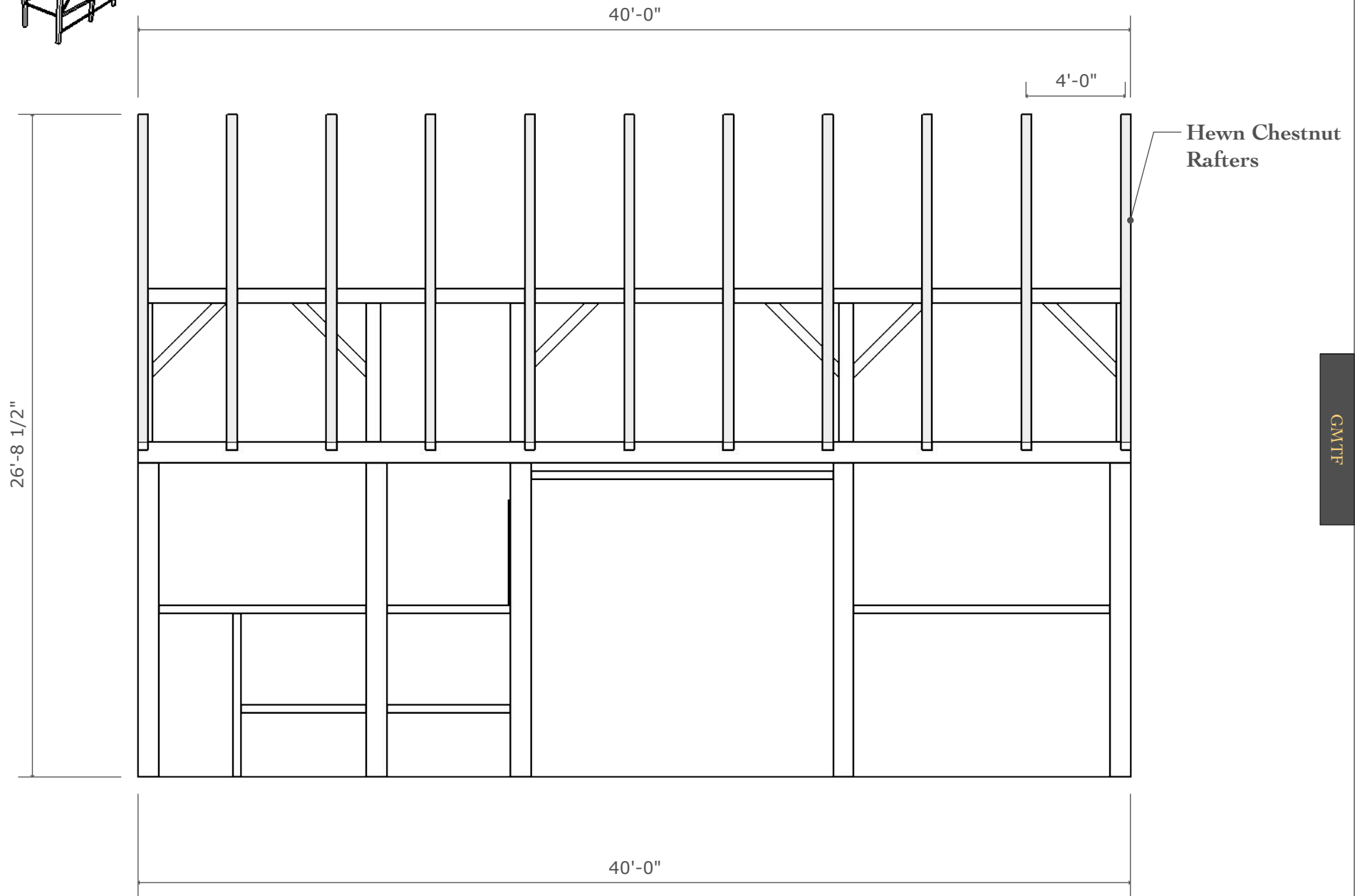
Bent IV  
1/4" = 1'



GMTF



Plate Wall A with roof system  
Not to Scale



GMTF